



Smarter Schedules.  
Faster Flow.  
Complete Visibility.

## Yard Manager

From gate-in to gate-out, our live yard management system optimizes bay schedules, reduces congestion, delivers visibility and insights you need to keep your supply-chain flowing.

Contact Us:

[info@sunstonels.com](mailto:info@sunstonels.com)  
[sales@sunstonels.com](mailto:sales@sunstonels.com)

Find Us:

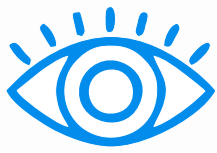


[www.sunstonelogisticssystem.com](http://www.sunstonelogisticssystem.com)



**sunstone**  
logistic systems

# Why Choose Yard Manager?



## Real-Time Visibility

Gain full control over vehicle, trailer and asset movement with live yard status updates, zone tracking, and real-time optimization.



## Smarter Scheduling, Faster Throughput

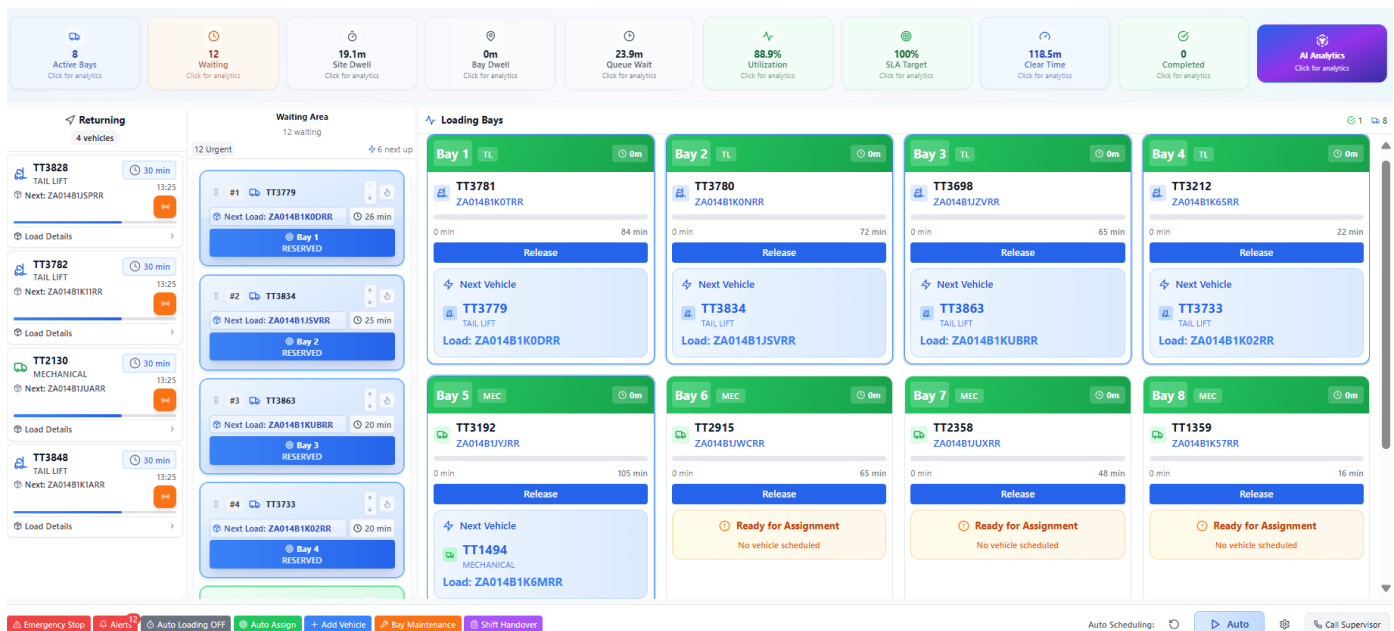
Automate bay scheduling and reduce bottlenecks by allocating vehicles to the right bays at the right time, based on live yard conditions and business rules.



## Strategic & Operational Insights

Track dwell times, identify delays, and analyze yard efficiency with powerful metrics and reporting tools that turn yard activity into performance insight.

## Yard Scheduler



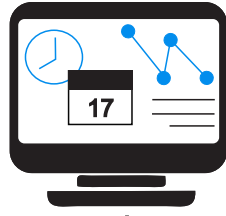
**Yard Manager** brings structure, visibility, and control to one of the most complex parts of your operation.

With live tracking, intelligent bay scheduling, and dwell time analytics, it streamlines asset flow from entry to exit—reducing delays, eliminating bottlenecks, and maximizing yard efficiency. Whether you're managing a high-volume depot or a regional distribution center, **Yard Manager** ensures every move is planned, tracked, and optimized.



# Yard Manager

## ASSET ALLOCATION



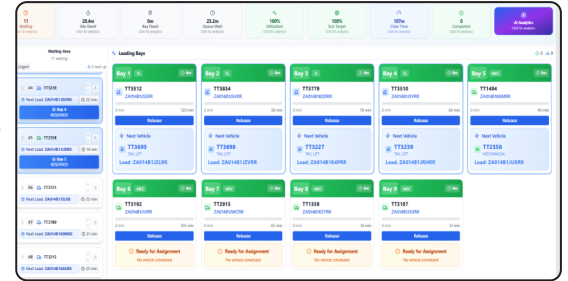
## LIVE POSITIONING



- Digital Journey Notifications
- Blue Track Yard Positioning Beacons
- Telematics API Integrations

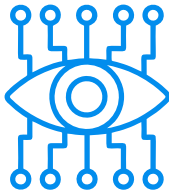
## YARD DASHBOARD

### AUTOMATED SCHEDULING & LIVE VIEW



- Bay Scheduling & Allocation
- Live Yard Visibility
- Dwell Time Tracking
- Entry & Exit Monitoring
- Alerts & Notifications
- Dashboards & Analytics

## Outputs



### Yard Visibility

- Live status of every asset, bay and zone.
- Real-time gate-in, gate-out, and zone movement tracking.
- Visual dashboard for full operational oversight.



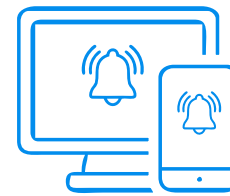
### Zone Scheduling

- Intelligent bay / zone assignment based on real-time yard status.
- Eliminate scheduling conflicts and idle vehicles.
- Simplify coordination across zones.



### Time Management

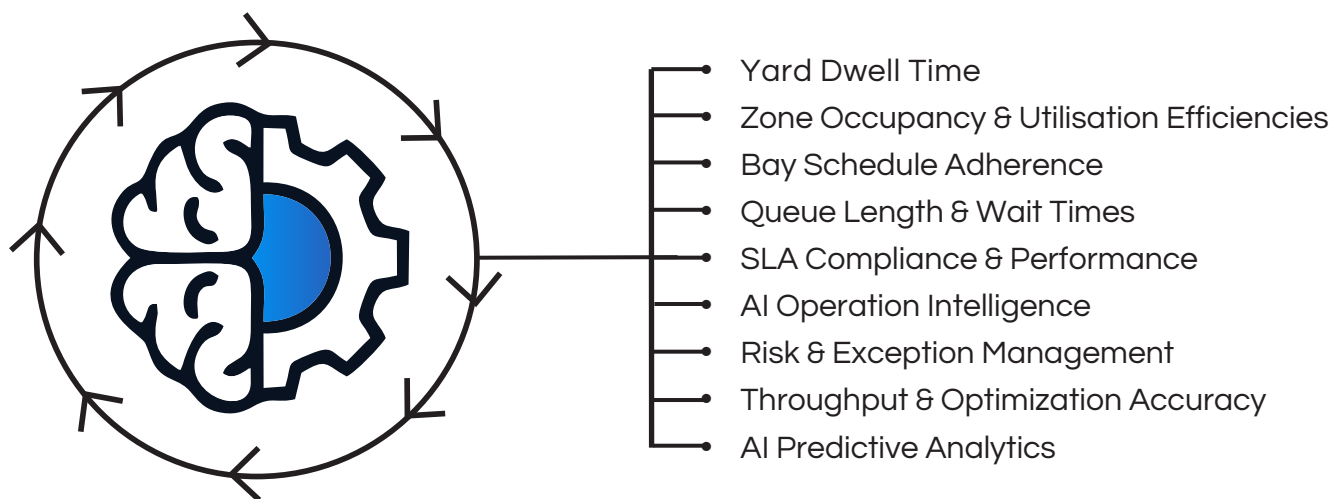
- Track time spent in the yard by asset & zone.
- Identify bottlenecks and reduce unnecessary delays.
- Benchmark performance and drive continuous improvement.



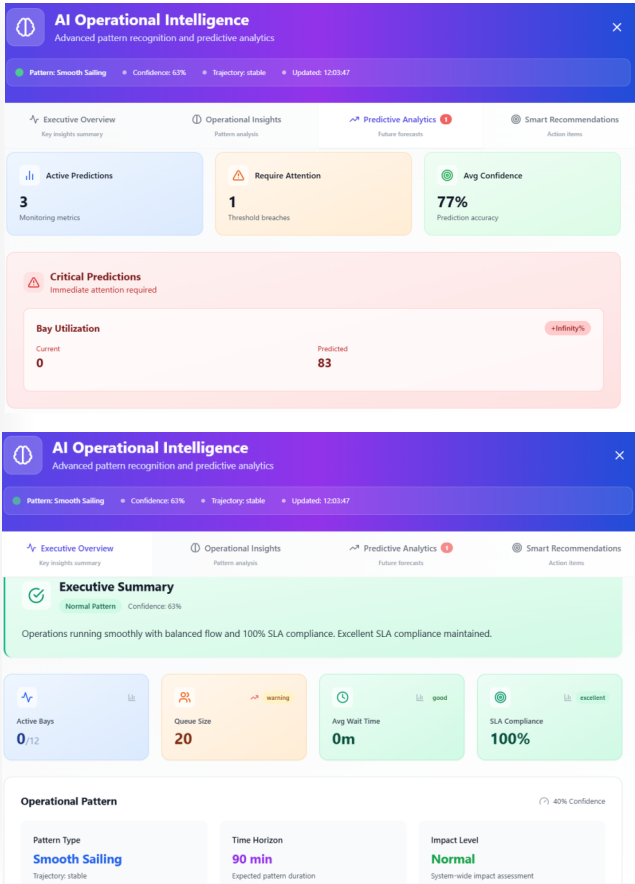
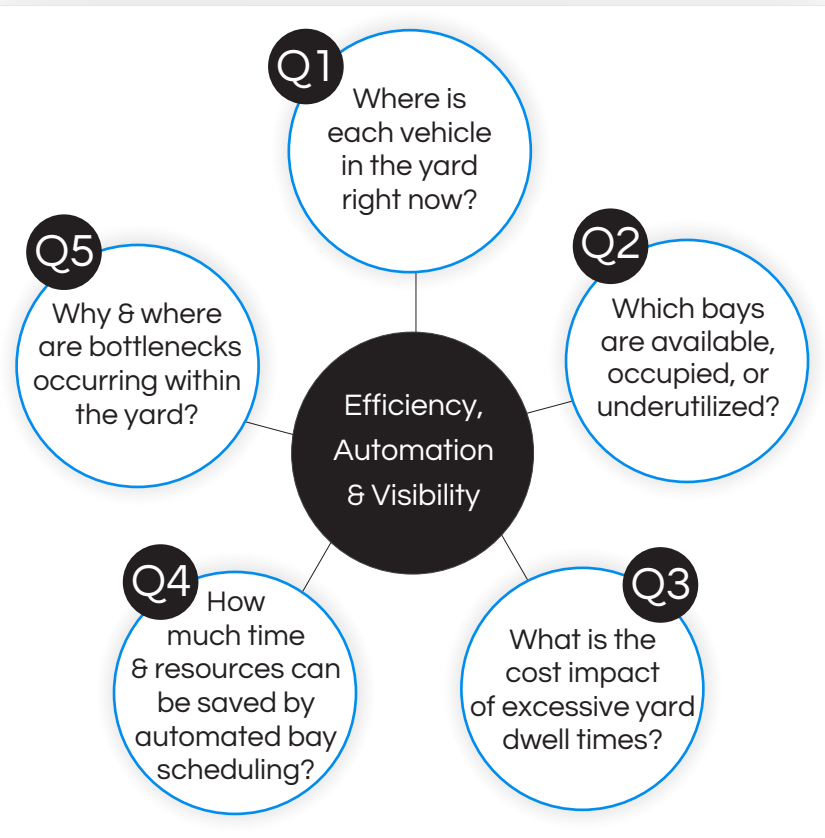
### Operational Dashboards

- Automate manual yard processes and notifications.
- Improve communication between yard teams.
- Optimize flow, increase throughput, and reduce congestion.

# Powerful KPI'S from Yard Manager



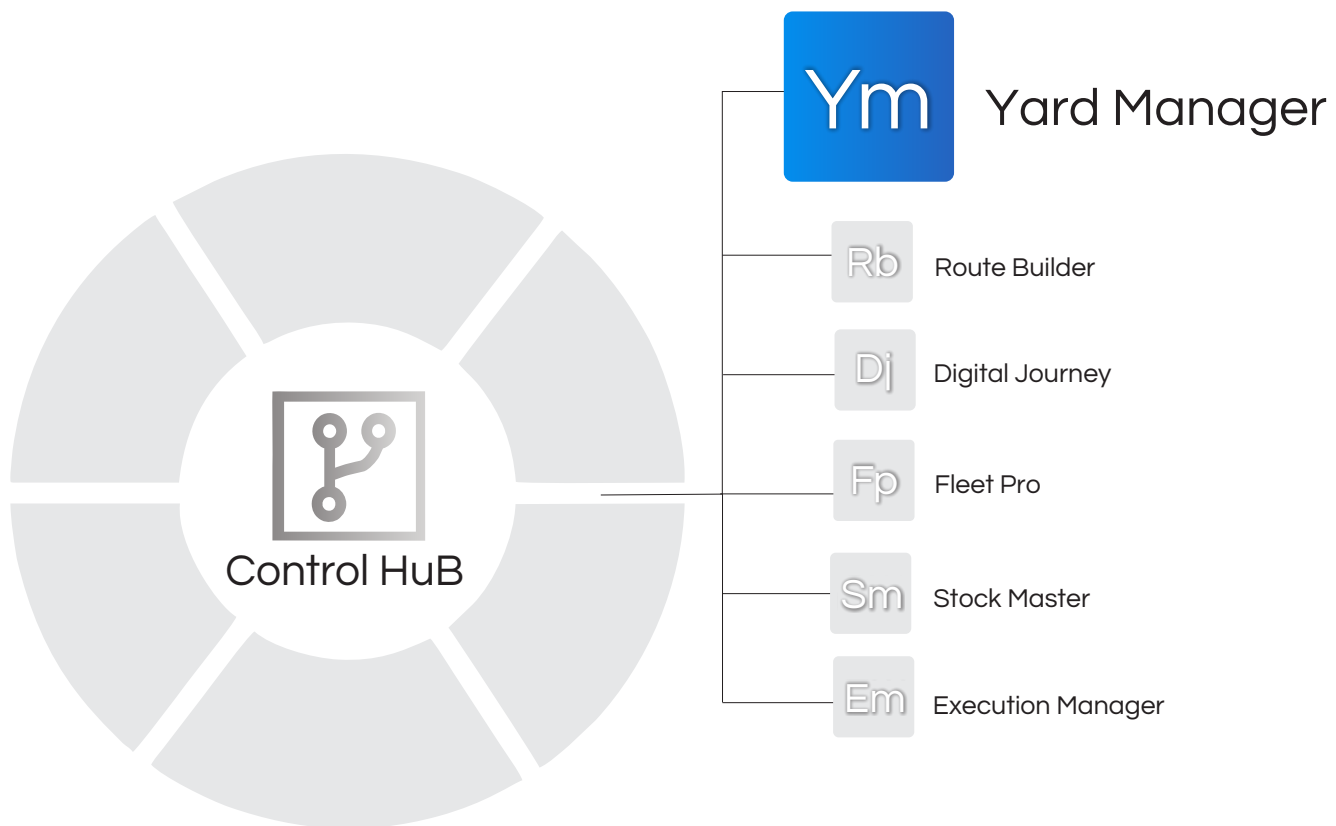
AI-driven **yard insights** that transform congestion into clarity and chaos into coordination.



Ready to elevate your yard management?

Contact our team to schedule a personalized demo and discover how **Yard Manager** can transform your logistics operations.





[www.sunstonelogisticssystem.com](http://www.sunstonelogisticssystem.com)